

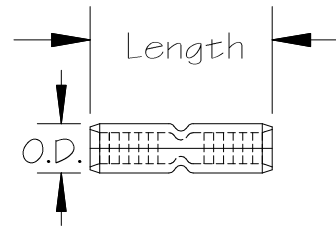
Hillsdale Terminal Butt Connectors

Butted Seam and Seamless Pure Copper Butt Connectors

Part #	Mat'l Thickness	O.D.	Length	Wire Ga.	Type	UL CSA
10080	.028	.133/.135	.560	22-18	Butted Seam	X
10170	.030	.152/156	.560	16-14	Butted Seam	X
10310	.035	.212/215	.625	12-10	Butted Seam	X
10083	.030	.133/.135	.560	22-18	Seamless	
10083L	.030	.133/.135	.625	22-18	Seamless	
10173	.030	.152/156	.560	16-14	Seamless	
10173L	.030	.152/156	.630	16-14	Seamless	
10313	.035	.212/215	.560	12-10	Seamless	
10313-L	.035	.212/215	.810	12-10	Seamless	

Butted Seam = Alloy 110 Seamless = Alloy 102

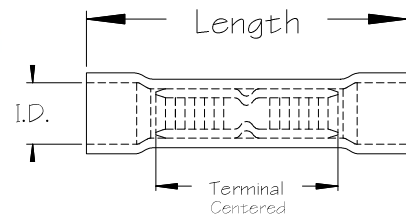
Annealed to Soft Temper and Electro-Tin Plated



EXTRUDED VINYL INSULATED - BUTTED SEAM TERMINAL

Part #	Insulator wall stock	Insulated Length	Wire Ga.	Bell I.D.	Terminal	UL CSA
20080	.030	.970	22-18	0.160 - 0.180	10080	X
20170	.030	.970	16-14	0.180 - 0.200	10170	X
20310	.032	1.060	12-10	0.230 - 0.250	10310	X

Insulator Material = Rigid PVC

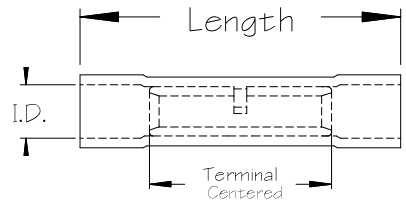


Vinyl Insulated Butted Seam Butt Connector shown

EXTRUDED VINYL INSULATED - SEAMLESS TERMINAL

Part #	Insulator wall stock	Insulated Length	Wire Ga.	Bell I.D.	Terminal
20080SV	.030	.970	22-18	.160	10083
20170SV	.030	.970	16-14	.180	10173
20310SV	.032	1.060	12-10	.235	10313

Insulator Material = Rigid PVC



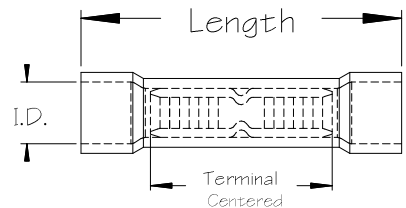
Extruded (Straight) Nylon Insulated Seamless or Butted Seam Butt Connector

EXTRUDED (Straight) NYLON INSULATED - BUTTED SEAM TERMINAL

Part #	Wall Stock	Insulated Length	Wire Ga.	Bell I.D.	Terminal
20081	.020	.990	22-18	.135	10080
20171	.020	.990	16-14	.155	10170
20311	.020	1.070	12-10	.205	10310

EXTRUDED (Straight) NYLON INSULATED - SEAMLESS TERMINAL

Part #	Wall Stock	Insulated Length	Wire Ga.	Bell I.D.	Terminal
20083S	.020	.990	22-18	.135	10083
20083LN	.020	1.06	22-18	.135	10083L
20173S	.020	.990	16-14	.155	10173
20173LN	.020	1.06	16-14	.155	10173L
20313S	.020	1.07	12-10	.205	10313
20313LN	.020	1.23	12-10	.205	10313L



Molded (Flared) Nylon Insulated Seamless or Butted Seam Butt Connectors

MOLDED (FLARED) NYLON INSULATED - BUTTED SEAM TERMINAL

Part #	Wall Stock	Insulated Length	Wire Ga.	Bell I.D.	Terminal
50081	.030	.985	22-18	.165	10080
50171	.030	.985	16-14	.195	10170
50311	.032	1.070	12-10	.270	10310

MOLDED (FLARED) NYLON INSULATED - SEAMLESS TERMINAL

Part #	Wall Stock	Insulated Length	Wire Ga.	Bell I.D.	Terminal
20083	.030	.985	22-18	.165	10083
20173	.030	.985	16-14	.195	10173
20313	.032	1.070	12-10	.270	10313